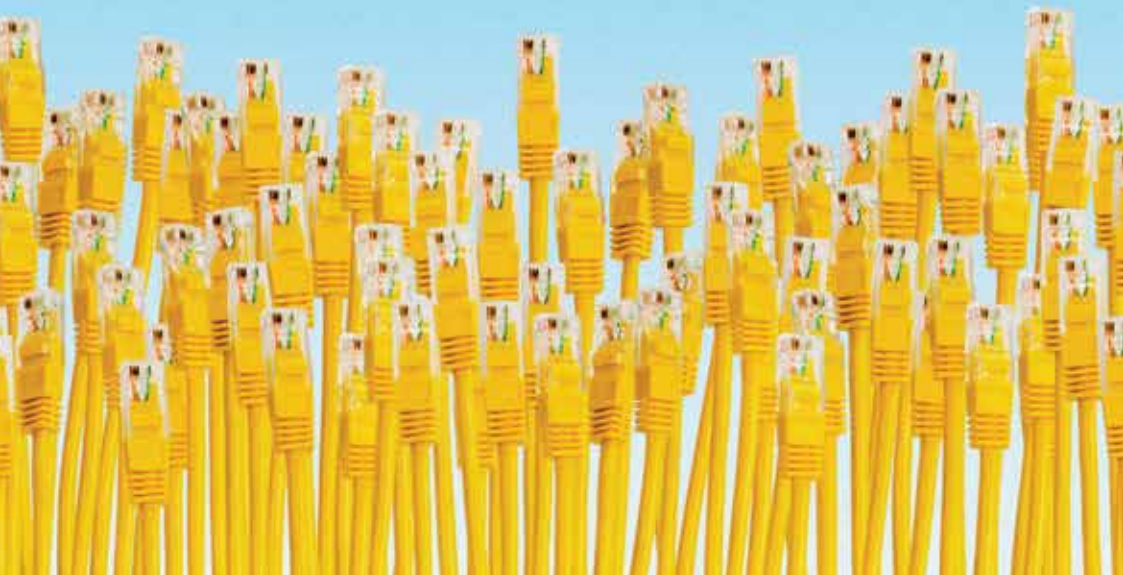


**Renew and manage your  
crop insurance online.**



**Early Bird Crop Online (EBCO) is WFI's online crop insurance client site. The site is free and simple to use. It allows you to manage your crop insurance online, giving you the ability to view your policy details and to submit crop and yield declarations whenever you like, all at the click of a mouse.**

**Avoid extra paperwork and renew your crop insurance online this year.**

### Who can use EBCO?

Renewing WFI Early Bird Crop policyholders are eligible to use EBCO.

### Getting access to EBCO

To gain access to EBCO, you'll first need to register in two easy steps.

#### Step 1 – Confirm eligibility

1. Go to wfi.com.au and click the **'Existing Clients'** link located at the top right hand corner of the homepage.
2. Under Early Bird Crop Online click **'Find out more'** then select **'Register for crop online'**.
3. Enter your client and crop policy numbers. These numbers can be found on any forms or letters we have sent to you. If you hold more than one policy number, you will only need to use one to register. All of your other policy details will be available to you once you have logged in.
4. Click the **'Confirm eligibility'** button to take you to Step 2 of the registration process.



#### Step 2 – Create your membership

1. Enter your name and email address details.
2. Create a password. It must be at least eight characters long and contain at least one letter and one number.
3. Click on the **'Terms and Conditions'** link to view information regarding EBCO, tick the box to accept then click **'Register'**.



4. You'll then be presented with your membership number. Keep a record of this number somewhere safe as you will need it to login next time. We've included a blank section at the bottom of this page for you to write this number down.
5. Click the **'Login now'** button to enter your home page.

#### Inside EBCO

Once inside, you will be able to view a summary of your crop policy and farm details, change your email address and contact names and of course submit your crop and yield declarations online. Renewing clients will experience the extra benefit of pre-filled crop declaration forms with details from the last crop season.

EBCO has been designed to be user-friendly, but if you have any questions along the way you can always contact your local WFI Area Manager for help.

#### Login to EBCO

To log back into EBCO, simply return to wfi.com.au, go to the Early Bird Crop Online page and click the **'Login to crop online'** link. Then enter your membership number and your password to get back into your home page.

**Your EBCO membership number is:**



**EBCO login is available from July 1**



Good people to know.

Call 1300 934 934 or visit [wfi.com.au](http://wfi.com.au)

Insurance Australia Limited ABN 11 000 016 722 AFSL 227681  
trading as WFI (WFI) is the issuer of this insurance.

EBCO 02 0817